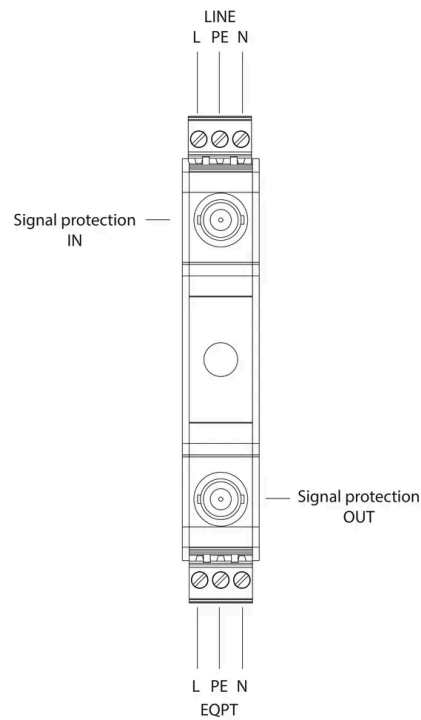


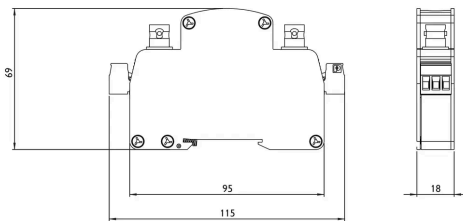
SFD1-6-3-30-C



Installation



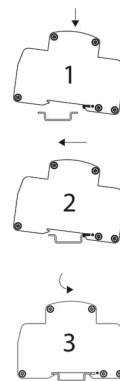
Dimensions



Terminal Information

Terminal Type	
min Capacity	0.5 mm ²
max Capacity	2.5 mm ²
Torque	0.6 Nm
Strip Length	

Mounting



Specifications

Electrical Specifications

Connection type		Series
Modes of protection		L-N, L-PE, N-PE
Nominal voltage	U_0	24VAC
Short circuit withstand level	I_{SCCR}	3kA
Maximum backup fuse		6A

Mechanical Specifications

Minimum operating temperature		-40°C
Maximum operating temperature		70°C
Minimum operating humidity		5%
Maximum operating humidity		95%
Mounting method		TS35 DIN Rail
Environmental rating		IP20