

# IS-SSP6A-26-G

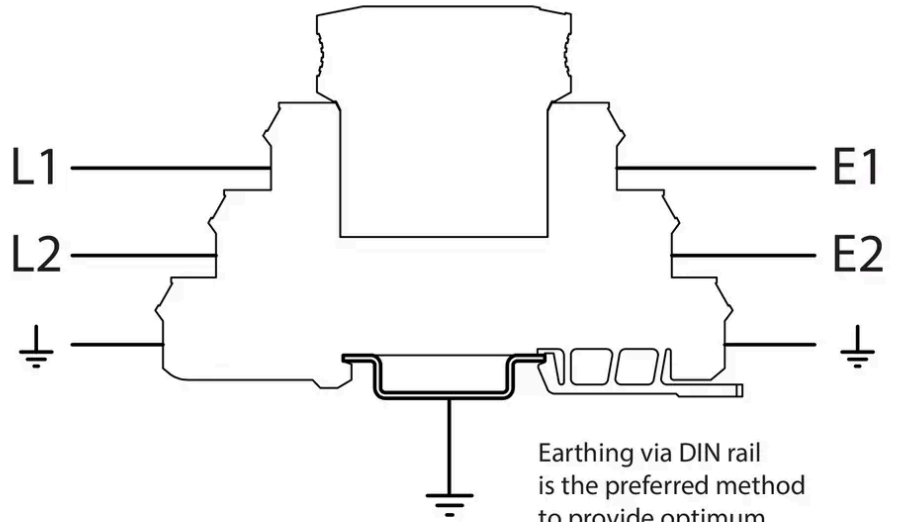


Image for illustrative purposes only

## Install

LINE

EQPT

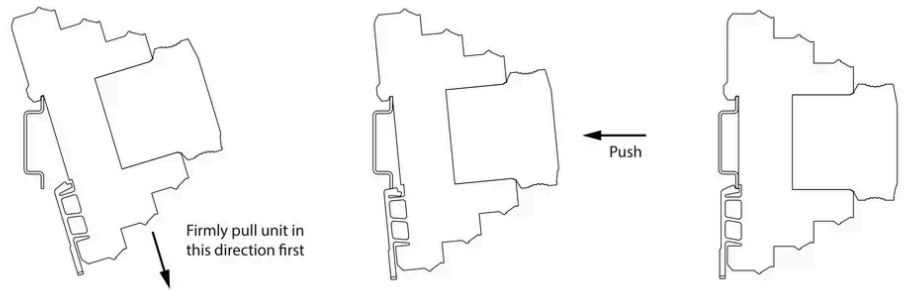


Earthing via DIN rail is the preferred method to provide optimum surge performance

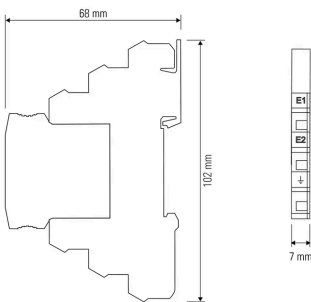
## Terminal Information

Terminal Type	
min Capacity	0.5 mm <sup>2</sup>
max Capacity	2.5 mm <sup>2</sup>
Torque	0.5 Nm
Strip Length	

## Mounting



## Dimension Information



## Module Extraction

